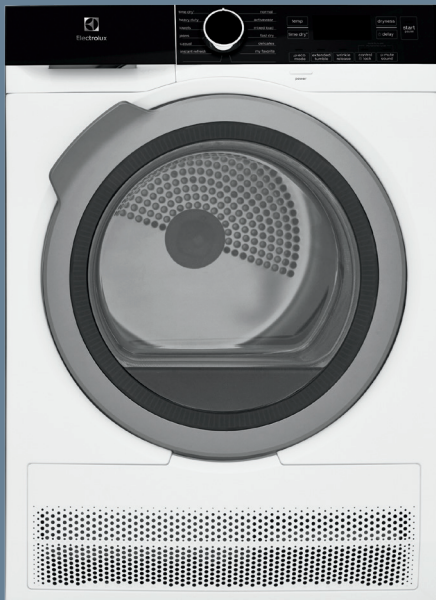


Better living means combining thoughtful compact design with technology that uses less heat to be gentler on your clothes.

A Quick Guide to Getting Started

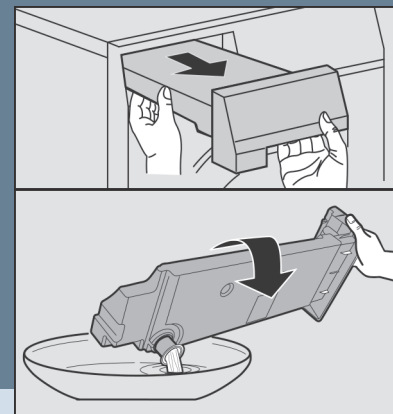


⏻ Before you begin

- Check that all shipping materials are removed and ensure the dryer is level, side-to-side and front-to-back; sitting evenly on all corners.
- Refer to your Installation Instructions for more tips.

+ Care and cleaning

- Do the following after every load to ensure the best function of your dryer:
 - » Clean the lint filter.
 - » Empty the water container.
 - *If the direct drain kit is installed, the water container does not need to be emptied. See the Use & Care Manual for more information.*



We Recommend:

Always make sure the water container is in place and empty before starting a load.

- Occasionally clean the condenser. Follow the instructions in the Use & Care Manual for more details.

? FAQs

- How is a condensation dryer different than a traditional dryer?

Condensation dryers are more energy efficient than traditional vented dryers as they recirculate the air preventing heat loss. This process usually causes them to take longer to dry clothes.

- How do I change a setting after a cycle has begun?

Turn the knob to the reset position (12 o'clock) OR press the power button to turn off the dryer and cancel the cycle. Press the power button to turn the dryer on again, select the new setting, then press start/pause to start the cycle. Changing a cycle selection without canceling the current cycle will not change the cycle selection.

- Is it normal for my dryer to make sounds or noises?

Some sounds are part of your dryer's normal operations. You may hear the suspension rollers or air exchange system moving air through the cycle. You may also hear the pump which extracts the condensed water from the unit. Check your Use & Care Manual to learn more.



The power button also cancels a selected cycle.



▶ Getting Started



▶ Turn on your dryer

Press the power button  to turn on your unit.

▶ Select a cycle

TIME DRY

Select this cycle to manually set the drying time. Use the time dry option button to scroll through the time increments.

NORMAL

Select this cycle for cotton items.

HEAVY DUTY

Select this cycle to dry durable fabrics such as sheets or other bedding.

DELICATES

Select this cycle for delicate knit items.

CASUAL

Select this cycle for cottons and no-iron blends.

MIXED LOAD

Select this cycle to dry mixed fabric loads.

INSTANT REFRESH

Select this cycle to help release wrinkles from clean and dry items.

TOWELS

Select this cycle to dry heavy loads such as towels and non rubber backed bath mats.

JEANS

Select this cycle when drying denim loads.

FAST DRY

Select to quickly dry small loads.

ACTIVWEAR

Select to dry lightweight synthetic and stretch fabrics.

MY FAVORITE

Customize any existing dry program and save it as a unique cycle for future use. See your Use & Care Manual for easy instructions.

EXTENDED TUMBLE

This option provides an additional 30 minutes of tumbling time without heat.

▶ Start load

Close the door and press the start/pause button.

👍 Learn More

We recommend familiarizing yourself with product features and terminology in your Use & Care Manual.

▶ Select cycle options

WRINKLE RELEASE

This option provides an additional 30 minutes of intermittent tumbling where the drum alternates tumble direction to reduce wrinkling in clothing items.

ECO MODE

This option runs the dry cycle with reduced temperature. Selecting Eco Mode generally increases drying cycle times.



Sustainability, together

Designed with advanced drying technology to use lower heat to be gentler on your clothes and help save energy.



Peace of Mind & Protection

Get more with product registration. Look for the photo icon on your registration card to text and register, or visit us online.

electroluxappliances.com

(877) 435-3287

10200 David Taylor Drive
Charlotte, NC 28262

electroluxappliances.ca

(800) 265-8352

5855 Terry Fox Way
Mississauga, ON L5V 3E4